

Low cost rubber smoke house

P.K. Narayanan

A fuel efficient, low-cost and tiny rubber smoke house has been designed and developed by Mr. C.K. George of Kothamangalam, an engineer-turned small rubber holder. This new device, which is very easy to operate, is a blessing for small rubber holders as it will fulfil a long-felt need for such a cheap smoke house. As this has been subsidised by the Rubber Board all the rubber growers can afford to have it.

This smoke house has the capacity to process 120 rubber sheets in three chambers, at the rate of 40 per chamber.

This new smoking device has been subjected to thorough technical scrutiny by the rubber technologists of the Rubber Research Institute of India and finally recommended for approval of the Rubber Board with slight operational modifications. The Rubber Board has in turn approved the model for adoption by farmers and made the same eligible for a cash subsidy of Rs. 3,000 a piece.

Ideal model

This smoke house has been rated fuel efficient as it consumes only about 700 gm of firewood to smoke-dry 1 kg rubber sheet. Anything including coconut husk could be used in this smoke house to smoke the sheets. This model is ideal for a small-holder who produces around 40 rubber sheets a day.

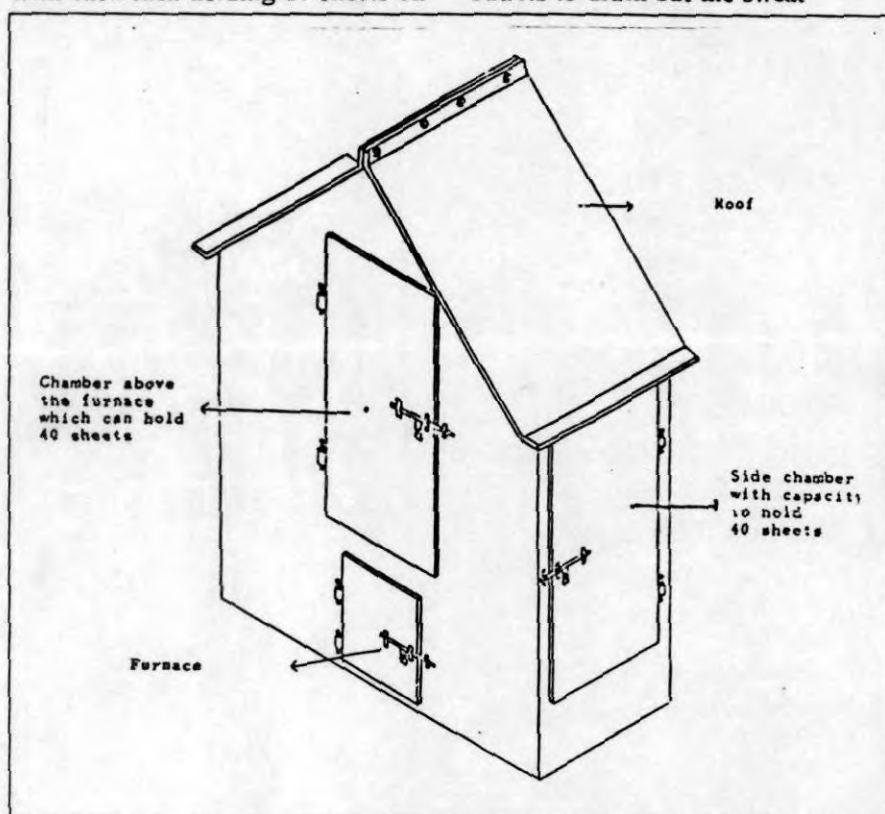
Of the three chambers in this smoke house, the one in the centre, just above the furnace will have only heat and no smoke, as the smoke

produced in the fire hearth are fully channelled out to the two adjacent chambers on the left and right. Therefore these two chambers will have both adequate heat and smoke.

Each chamber can smoke 40 sheets at a time, hung in four racks with each rack holding 10 sheets on

same sheets are to be inverted so that the reverse side gets well exposed to smoke and heat. On the third day these sheets are to be transferred to the central chamber where it will get well heated and fully dried.

As each chamber in this smoke house can be tightly closed by the built-in ferro-cement shutters, efficient conservation of smoke and heat inside is assured. Provision has also been made through suitable outlets to drain out the sweat



wooden rods. These racks can be slid out and the sheets conveniently hung on them.

The sheets should, as far as possible, be made of standard size - say 3 mm thick and weighing around 500 gm. It takes 72 hours for such sheets to smoke-dry in this smoke house.

Rubber sheets processed to strict scientific standards are to be put first in one of the chambers in the sides, after draining. Next day the

formed in the roof of the smoke house.

The wooden rods used for hanging the sheets in the racks should be taken out and cleaned at frequent intervals so as to keep them free of smoke-stain.

Easy to operate

This smoke house could be erected in a convenient place near the residential house of the farmer like a cupboard. It is very easy to operate. As the smoke is sent out

Mr. P.K. Narayanan is Rubber Production Commissioner, Rubber Board, Kottayam.

Best Compliments from

KAYPAN G R O U P

2, Vardhaman Complex, L.B.S. Marg, Vikhroli (W), BOMBAY 400 083.

Telephone : 578 3409, 578 5115 Tele-fax: 022-578 5834

Telex : 11-72215 GKAY IN Telegram : CAYPANCHEM

KAYPAN CHEMICALS :

● CONSIGNMENT AGENTS OF :

M/s Oriental Carbon & Chemicals Ltd.
- for Insoluble Sulphur & Diamond Carbon Black.

M/s Apar Limited (Special Oil Refinery Div.)

- for Power Oils - Rubber Process Oils.

● STOCKISTS FOR :

Calcium Carbonate (PPTD) of

M/s Himalaya Cement &

Calcium Carbonates Ltd.

Stearic Acid of

M/s Thapar Agro Mills Ltd.

● DEALERS IN :

All types of Imported/ Indigeneous Rubber Chemicals & Sy. Rubber.

● INDIAN AGENTS FOR :

M/s Lippincott & Peto Publications - U.S.A.

- Rubber World,

- Product News,

- Blue Book (Materials, Compounding Ingredients & Machinery for Rubber).



M/s Crain Publications - U.S.A.

- Rubber & Plastic News.

- Rubbicana (Rubber Directory & Buyer's Guide).

ROHIL ZINC LIMITED

Manufacturers of SWAN BRAND - ZINC OXIDE (WHITE SEAL)

CLARK TYRES & POLYMERS PVT.LTD.

Manufacturers of 'Hot /Cold Process Tread Rubber' and compounding materials.

KAYPAN EXPORTS PVT LTD.

Exporter of all Syn. Rubber & Rubber Chemicals, Zinc Oxide (White Seal), Calcium Carbonate (PPTD), Oil seals etc.

Factory :

Unit I - 204 GIDC, Phase I, Junagadh 362 003, Gujarat - INDIA

Unit II - 205 GIDC, Phase I, JUNAGADH 362 003, Gujarat - INDIA.

209/210 GIDC, Phase II, Daulatpara, Junagadh 362 003, Gujarat - INDIA.

Telephone : 26563, 22852 Tele-fax : 0285-26543

Telex : 164-217 GKAY IN Telegram : CAYPANCHEM

H.O. - 53/59 Gaya Building, 109 Yusuf Meherali Road, Bombay-3.

filtered to the side chambers, deposit of carbon particles on the sheets is reduced to the minimum. Under proper smoke-drying conditions, the rubber sheets attain the superior amber colour.

It takes only three days to build this smoke house, which has a guarantee for one year. The designer can make arrangement to build the same for those who need it. The cost of making a smoke house like this is Rs. 8,500 besides actual cost of transportation of the building materials to the site.

For details contact: Mr. C.K. George, Chakkiath, Kuthukuzhi P.O., Kothamangalam (Phone: 04855 - 22791).

Gloves with a difference

The new nitric gloves produced by the Malaysian company Rubberex and Filrex are different from ordinary one in several ways. It is made from specially formulated butadiene-



Good protection for hands

acrylo-nitrite latex. They are highly flexible and comfortable for hand protection of those who are

doing industrial work. They offer excellent resistance against abrasion cuts, snags, punctures, ageing, weathering, gas and water permeability. The gloves are available in sanitised cotton flock lined and unlined.

These gloves are chemically toughened for resistance against most solvents like aromatic and petroleum. They will not swell or degrade against animal fat. □

Cool mattress

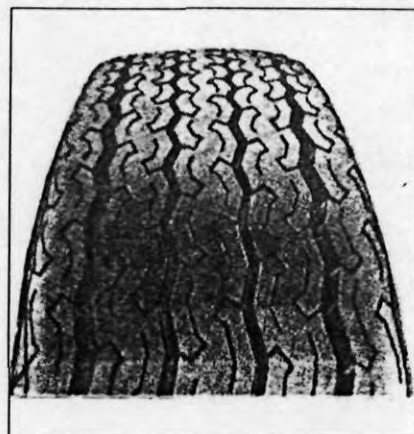
M. Foam Pincore Mattress, designed to provide maximum cool and comfort to a customer is full of tiny pin-sized cores that permit constant air circulation. The mattress actually breathes to keep you cool. It is claimed by the manufacturers that the firm and balance pure latex rubber structure conforms to your body's contours whichever way you toss and turn. The other advantages claimed by the company are that it is reversible and also repels bedbugs and vermin. All these add to a lifetime of cool comfort. □

New tyre for Premier

MRF has introduced a new tyre specially designed for the Premier 118 NE. The tyre MRF BROAD 6.15-13 SW 99, according to the manufacturers, is broader than any other conventional nylon tyre in its category.

The new tyre launched in New Delhi recently has criss-cross knife sipes that bite the road and provide a vice-like grip in both wet and dry conditions. The company claims that a computer determined amalgam of rubber chemicals and polymer, further enhances car mileage while extra rubber ensures longer tyre life. The tyre was

launched in Bombay, Ahmedabad and Pune a few months back. It is



Different from conventional tyre

expected to enter other cities very soon. □

High yield rubber clone

In Malaysia high yield timber latex clone is replacing the old rubber trees and about 1.2 million hectares of rubber small holdings will be replanted with it in the next 10 years. The clone, which yields high quality latex and rubber wood, has already been planted in 30,000 hectares and it adapts well to the soil and climatic conditions.

According to the findings of the Rubber Research Institute (RRI), the rubber trees can be felled when they are between 20 and 25 years old. The clonal trees can produce 3000 kg of latex per hectare per year compared to 1000 Kg from the old trees. The tapping can be done about four-and-a-half years after planting compared to seven years now. Unlike daily tapping of the old trees the timber-latex clones could be only attended to once in three or four days. The yield is high because latex stimulants are injected into the trees.

The timber latex clone which yields high quality latex and rubber is thicker and straighter. □